



## This Issue

- Laura Fraga - Journey With Dear Jane Workshop  
Saturday, March 10th
- Slow Stitching Saturday! Saturday, April 21st
- Lisa Walton – "Stamp, Paint, Stitch" Workshop  
Friday, May 11th
- WQ Officer & Chairman Reports
- Call for Entries
- Neighborly Guild Calendar

## Next Quarterly Meeting

**Saturday, May 12, 2018**

St. Johns Presbyterian Church - Fellowship Hall  
11000 National Blvd. L.A 90064

**Lisa Walton**

Australian quilt artist and teacher  
"Textile Traveler"



## Up Coming Workshops & More

- Our **Saturday, March 10** workshop "**Journey With Dear Jane**" is now open for registration. Learn where and how to start your journey into the blocks originally made by Jane Stickle for her famous quilt. You will make several Dear Jane blocks as you learn accurate machine piecing, paper piecing and quick cutting techniques. Dear Jane is a quilt that Jane Stickle completed in 1863 during the Civil War. Brenda Papadakis discovered it at the Bennington Museum in Vermont and introduced it to the world in 1996.
- **Something new! Slow Stitching Saturday!** Join us on Saturday, April 21st from 10 to 4 for our first Slow Stitching Saturday! We'll meet at the home of Roberta Walley in Westwood for a very relaxed day. Drop in ... drop out.... come for an hour or two or all day. Bring your hand work - anything - a binding to stitch, hand piecing, a project to hand quilt, some embroidery, knitting, crochet anything that doesn't require a machine or electricity. Bring your brown bag lunch, we'll provide dessert and drinks.
- Friday, May 11<sup>th</sup> Workshop starts off a special visit from Australian quilt artist, teacher and newly elected president of SAQA, **Lisa Walton**. "**Stamp, Paint, Stitch**"
- Saturday, May 12th Our May General Meeting features a presentation by **Lisa Walton**, "**Textile Traveler**"
- **Sandra Bruce** will be doing her Material Matrix workshop for WQ on June 30th



## ***PRESIDENT'S MESSAGE***

### **Emerge**

I am writing my article for this month, sitting outside in the whimsical and magical garden my husband has created. He designed and built it three years ago and last year he turned it into a Monarch butterfly way station. We are reaping the benefits with a constant flow of caterpillars, chrysalis and butterflies. The pupas of the Monarch look like a piece of jade jewelry with a thin sliver of gold wrapping around it, we spend hours trying to find where they have hidden themselves, wonderful cheap entertainment! Nothing says spring like butterflies emerging from their chrysalis. Loving the poppies and lavender blooms as well, love all that orange and purple. I have a nice stash of Monarch photos and I think an art quilt is in the works.



I attended the QuiltCon show last weekend in Pasadena. I was captivated by the bright colors and bold graphic designs. I loved the SAQA Presents - Art Quilts from the 1970's Through Today. I liked the layout of the quilts on light colored backgrounds and the fact that you could walk right up to the quilts to see the stitching up close and read the stories from the quilter. I emerged from the show hungry, literally and hungry to get home and sew.

"Good art is art that allows you to enter it from a variety of angles and to emerge with a variety of views."

- Mary Schmich

I look forward to see what quilts emerge from our members at our May meeting, so keep on quilting!!

Keep on quilting and see you soon,

Kim Ryan, President





\*\*\*There are still a few seats left.\*\*\*

Westside Quilters presents a workshop with quilt artist and teacher

**Laura Fraga**

[www.LauraFragaQuilts.com](http://www.LauraFragaQuilts.com)

**“Journey with Dear Jane”**

**Saturday, March 10,**

**9:30 - 3:30**

St. Johns Presbyterian Church

11000 National Blvd., Los Angeles, CA 90064

**Workshop Fee \$80.00** (\$75 for early registration by February 10)  
Fee for non-members \$95.00.

## **Journey with Dear Jane**

Learn where and how to start your journey into the blocks originally made by Jane Stickle for her famous quilt. You will make several Dear Jane blocks as you learn accurate machine piecing, paper piecing and quick cutting techniques. Dear Jane is a quilt that Jane Stickle completed in 1863 during the Civil War. Brenda Papadakis discovered it at the Bennington Museum in Vermont and introduced it to the world in 1996. <http://www.dearjane.com>

Laura has been a “Janiac” (rhymes with maniac, you get the picture) since 2000. To date she has completed five Dear Jane quilts of different sizes and helped numerous other quilters with their Dear Jane journeys. Your blocks can be made from traditional fabrics or modern prints, batiks, solids.... you choose and come up with your own special Dear Jane.

The **Supply List** is posted on the WQ website Calendar Page at [www.westsidequilterslosangeles.org](http://www.westsidequilterslosangeles.org). Click on the Supply List link.

## **About Laura :**

“I have cherished childhood memories of watching my Abuelita, my father’s mother, hand quilt traditional quilts with her church group. That inspired me to learn different domestic crafts as I grew up. (You should see how well I can press a dress shirt!) After taking cake decorating, crochet, needlepoint and tole painting lessons, I found my niche in 1990 after taking my first quilting class. Once I mastered the basics, I defined two great passions: hand appliqué and making “Dear Jane” quilts. I have been a Janiac (rhymes with maniac, you get the picture) since 2000. To date I have completed five Dear Jane quilts of different sizes and helped numerous other quilters with their Dear Jane journeys.

Sharing my passion of quilting through teaching is very rewarding to me. Students from my classes have told me they appreciate my hands-on teaching approach. I strive to ensure that everyone leaves my classes feeling confident and more competent.”

**Want to sign up?** Email to [programs@westsidequilterslosangeles.org](mailto:programs@westsidequilterslosangeles.org) or call Sally Wright at 310-471-6034.

*(more info on page 4)*





# WESTSIDE QUILTERS

## Laura Fraga - Journey With Dear Jane

[www.laurafragaquilts.com](http://www.laurafragaquilts.com)

**Saturday, March 10, 2018**

For more information contact Laura at  
[laurafragaquilts@att.net](mailto:laurafragaquilts@att.net)

### Please bring:

#### Supplies

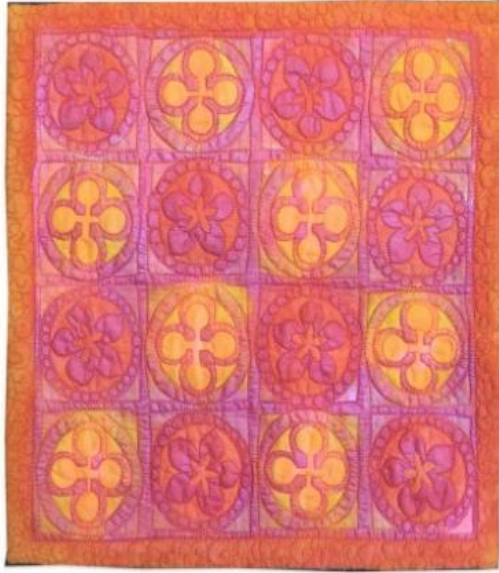
- Your sewing machine in good working order with manual
- Surge protector and extension cord for your machine
- Machine needles - Schmetz 70/10 for piecing, Universal 90/14 for paper piecing
- Good quality thread (DMC or Aurifil 50w)
- Pins, rotary mat and cutter with a **new blade**, Dear Jane
- Ruler, Omigrid ruler with 1/8 marks (4X8)
- Seam ripper
- Portable table light such as an OttLite
- Scissors - paper and small embroidery
- Stiletto (used in machine piecing)
- Small pressing surface (June Tailor or Similar) Optional - there will also be 3 irons and boards in the room
- Clover wedge or travel iron
- Dear Jane book or CD by Brenda Papadakis

### Fabric:

- 1/2 yard background fabric
- 4 different fabrics for blocks (fat 1/8 - 9 X 22) solids, prints, batiks, whatever....

Please note: If you can't find the Dear Jane Book, CD or Dear Jane ruler at your local quilt shop they are both available on Amazon.





Westside

Quilters presents a workshop with Australian quilt artist and teacher

**Lisa Walton**

[www.Lisawaltonartist.com](http://www.Lisawaltonartist.com)

**"Stamp, Paint, Stitch"**

**Friday, May 11, 2018 9:30 - 3:30**

St. Andrews Lutheran Church

11555 National Blvd., Los Angeles, CA 90064.

**Workshop Fee \$75.00 (\$70.00 for early registration by April 11) Fee for non-members \$90.00.**

**Materials fee \$20.00** due to Lisa on the day of the Workshop  
(see Supply List for what it includes)

## Stamp, Paint Stitch

In this exciting technique driven workshop you will create your own original stamps using compressed sponge and then print them onto fabric which will then have additional fabric paint added. Then you can quilt your pieces into cushions or small wall hangings. A great surface design technique experience!

The **Supply List** is posted on the WQ website Calendar Page at <http://www.westsidequilterslosangeles.org/Calendar.html> Click on the Supply List link on Lisa's workshop listing.

### About Lisa:

Lisa started with traditional quilt techniques over 25 years ago, but she says "I quickly developed the urge to break the rules". She has a fascination with dyeing and surface design and now concentrates on more "serendipitous and experimental pieces". "I have a passion for sharing my knowledge and teaching", she says. In 2010 she was awarded the Jewel Pearce Patterson Scholarship for Teachers by the International Quilt Association in Houston. In 2013 C&T Published her first book *Beautiful Building Block Quilts* and in 2014 and 2015 self-published two subsequent eBooks. Lisa is currently the president of Studio Art Quilt Associates - [SAQA.com](http://SAQA.com) - and international non-profit organization dedicated to promoting the art quilt and the artists who create them.



Her other obsessions for food and travel have opened other doors and now she travels all over the world teaching and leading textile and food tours. Her hand dyed and painted fabrics are available for sale online store Dyed and Gone to Heaven accessed from her website. Lisa Lives in Sydney, Australia with her husband, Peter.

**Want to sign up?** Email to [programs@westsidequilterslosangeles.org](mailto:programs@westsidequilterslosangeles.org) or call Sally Wright at 310-471-6034.

(more info on page 6)



# WESTSIDE QUILTERS



**Lisa Walton Workshop**

**Friday, May 11, 2018**

**“STAMP PAINT STITCH”**

## Supply List

### Bring with you

- Apron or clothes suitable for getting messy
- 1.5” – 2” cheap foam brush
- At least 4” foam paint roller and tray as long as it matches the size of the roller
- Plastic ice cube tray to use for paints
- Jar for water (brush cleaning)
- Small sharp scissors or craft knife and small cutting mat (12”)
- Sharpie or black felt tip pen
- 12-24” ruler and pencil
- Sewing machine in working order with standard sewing foot and free motion quilting foot, bobbins, manual and extension cord.
- Selection of threads for quilting in preferred colorway
- Batting – 60” x 24”

**Material fee of \$20** (due to Lisa on the day of the workshop) includes the following

- 1 meter good quality white cotton fabric
- Compressed Sponge for stamps
- Use of Fabric Paints – range of opaque fabric paint for stamping and transparent fabric paints for colourwash.

Any questions please contact Lisa directly at [lisa@dyedheaven.com](mailto:lisa@dyedheaven.com)





# PHILANTHROPY

Hello, WQ Members,

We've already received about a dozen quilts for 2018. We will continue to collect quilts for all of 2018 in order to donate to Upward Bound and A Child's Dreams at the end of the year and which gives you plenty of time to be creative.

We will separate out larger quilts for Upward Bound (services families that are homeless) and smaller quilts will be donated to A Child's Dream (babies to age 18). Along with quilts, we would like to donate receiving blankets and hats for the children of A Child's Dream.

We will continue to make and collect Lisa Drew's strip scrap block through the year. Since everyone had so much fun last November putting these blocks together, we'd like to repeat the experience. We will once again designate Philanthropy Day in November 2018 as our day to put these blocks together for quilts. Of course you are welcome to bring your own project to work on.

We will continue supporting Dollies Making a Difference and Wounded Warrior quilts.

Thank you all for your ongoing generosity and hard work.

Perla Rothenberg, Lisa Drew, Virginia Marshall  
Philanthropy Co-Chairs

Below are some links that you can check into for tutorials:

Jenny Doan and receiving blankets: [Self Binding Baby Blanket with Shannon Cuddle](http://www.shannonfabrics.com/download_patterns/Self-BindingBabyBlanketandLoveyPatter)



## ***Self Binding Baby Blanket with Shannon Cuddle***

*Free Downloadable Pattern:*

[http://www.shannonfabrics.com/download\\_patterns/Self-BindingBabyBlanketandLoveyPatter](http://www.shannonfabrics.com/download_patterns/Self-BindingBabyBlanketandLoveyPatter)

Ellen Harpin's adult hat: [Ellen's Knit Hat pattern by Ellen Harpin](https://www.allfreeknitting.com/Baby-Knit-Hats/Two-Baby-Hat-Knitting-Patterns)

***Ellen's Knit Hat pattern by Ellen Harpin***

*Finished hat is between 8.5 and 10 inches deep and stretches to 22-24 inches around. The decreases spiral to the...*



Burp cloths: How to sew a Burp Cloth - easy for beginners!

Baby Hat: Two Baby Hat Knitting Patterns <https://www.allfreeknitting.com/Baby-Knit-Hats/Two-Baby-Hat-Knitting-Patterns>

Crochet hats: 50 Beginner Crochet Hat Patterns <https://www.allfreecrochet.com/Hats/24-Beginner-Crochet-Hat-Patterns>



shutterstock - 81319225

## Leadership.....

These days we Americans have such high expectations that our standard of living surpasses that of most royal families of the past eons of civilization. Air-conditioning and central heating are at the ready with just the flick of a switch pushing blistering heat or chilly nights back into a comfort level that no royal castle could boast 75 years ago. My Sleep # mattress and motorcar afford me kingly comfort and no bugs bash themselves into oblivion against driving goggles.

Even with all our luxuries, we often seem to need more and better—I certainly am no exception as I sew with the best Viking has to offer though with all its bells and whistles it sews fabric together no more beautifully than my little ancient, red feather-weight. With all our gadgetry and up-to-the-date Apps, however, we cannot adequately plan for a disaster that turns one's possession to ash in minutes or illnesses that alter our lives or the lives of our children for a lifetime.

What is awesome though is how we see quilting communities rally around a need and support those who have found themselves in dire or scary circumstances. I think of the overwhelming response to the needs of our neighbors wiped out by fires and mud. Quilt blocks, fabric, donations, food, and personal assistance have poured in and continue to flow to ease this time of recovery. I think also of a one-gal outfit called *A Doll Like Me* who wanted to provide dolls for children who have illnesses or physical features such as missing or malformed limbs, birthmarks, or other defining features that sets them apart. She's creates unique dolls for both boys and girls. As she was designing another doll, she thought maybe a doll quilt or a doll hospital gown would be a good addition to the dolls she so painstakingly matches to a particular child's eye and hair color and his or her defining feature. No hair? Then that's part of it, only 3

fingers on a hand, then the doll has only 3 fingers too. A quilter heard about this idea, and before you know it, she put the word out and guilds met those needs not only with quilts and doll clothes but also with donations, as they knew the dolls are expensive to make and mail. Well done! It's what we have come to expect from quilters. See a need and meet it, and all the while doing what we love.

Opportunities present themselves to me in a myriad of ways that I know I can easily lend a hand and make someone's day or situation a bit easier—plus I get to use my royal tools and reduce my royal stash all for the greater good! A win-win situation wouldn't you say!

Sonja Daniel  
WQ Vice President



Perla Rothenberg	March 3
Sylvia Davis	March 4
Sally Madigan	March 9
Pat Karasick	March 16
Margot Slocum	March 21



## Workshop costs

Thanks to our members for being so supportive of our workshops. We, the program chairs, carefully pick our workshop teachers. We look for people that are top in their field and have a good reputation in the quilt world. We are concerned that we vary the skills they teach.

We try to cover all aspects of quilting. Then we concern ourselves with the cost to you our members. We have to pay rent for the workshop; we pay the teacher and provide any meals, housing, and transportation involved. Lots of costs!

It is not our goal to make a profit only to hopefully cover expenses.

So.... your participation is essential.

Your WQ Program Chairs:

Sally Wright, Kathryn Pellman, Roberta Walley

## WORKSHOP REGISTRATION

First, please email your intent to attend a workshop to: [Programs@WestsideQuiltersLosAngeles.org](mailto:Programs@WestsideQuiltersLosAngeles.org) At the **WQ website**, choose *Calendar* and scroll down to individual workshops. See the link to the Workshop Registration Form (which you can fill in on-line and then print) and the supply list. **See the workshop no-refund policy (substitutions allowed) shown on the Workshop Registration Form.**

WQ will hold your space at the workshop for 14 days to allow time to mail Registration Form and payment to the WQ post office box. For last-minute registrations, contact the Program Chair ASAP. **Credit cards/debit cards now accepted.** Non-members pay a \$15.00 surcharge. Supply lists for all classes can be found on the Calendar page at [www.WestsideQuiltersLosAngeles.org](http://www.WestsideQuiltersLosAngeles.org). The class sessions are from 9:30am to 3:30pm.



## MEMBERSHIP

Membership is continuing to grow. Three new members joined at our last General Meeting bringing our total to 86. And, we now have two members who have quilting shops in our neighborhoods.

Luann  
Membership Chair



## TREASURER

Karynn Dittmar, Treasurer

<b>OPENING BALANCE AS OF 6/1/17</b>		<b>8146.58</b>
<b>INCOME</b>		
Membership Dues / Donations	3100.00	
Workshop Fees	4580.00	
Guest Fees	40.00	
Fabric Sale Fundraiser	994.00	
Amazon	112.17	
<b>TOTAL INCOME</b>		<b>8826.17</b>
<b>EXPENSES</b>		
Workshop Expense	4750.39	
General Meeting Expense	2964.90	
Charitable Contributions	460.00	
Membership Expense (refund)	50.00	
SCCQG Insurance	310.00	
Website	220.25	
PO Box Rental	132.00	
Philanthropy / Ed. Expense	200.00	
Printing / Promotion / Admin.	67.75	
Square Up Fees	82.51	
Government Fees	25.00	
<b>TOTAL EXPENSE</b>		<b>9262.80</b>
<b>NET INCOME</b>		<b>-436.63</b>
<b>CLOSING BALANCE as of 2/26/18</b>		<b>7709.95</b>



### WEBSITE:

The Westside Quilters website at [www.westsidequilterslosangeles.org](http://www.westsidequilterslosangeles.org) has been updated with all the photos from last month's quarterly meeting with Susan Brubaker Knapp. Take a look at our members' amazing work shown at the meeting on the Quilters Showcase link.

Please note that the Members Only page of the website has just been updated with the new password for the 2017-18 Membership year. The log-in and new password have recently been sent to you in your Membership Letter. Please note the info and put it in a safe place where you can find it easily. The Members only page is where you can access the Membership Roster along with other members' info from time to time and catch up on and refer to an archive of WQ Newsletters.

Sally Wright, Website Manager



# Calls for entry

Continuing our notifications for ways to display your quilts and textile pieces to a wider audience... Entering shows is not difficult, but to begin here are a few guidelines:

- Always make sure you read everything in the call including the calendar, requirements, rules, etc. Especially the rules! Will save headaches and disappointment later on.
- Keep a record on your entries so you won't be caught with a quilt needing to go two places at once. Having to remove a quilt from a show or exhibit because you misread the exhibition dates is a no-no. Ask me how I know...
- Having a great photo of your quilt - straight on, in focus, not on a bed or held up showing hands and feet, super important. There is lots of great info on quilt photography on line. Google!
- Don't be intimidated or depressed by a rejection! There are lots of different reasons why a quilt doesn't fit into a specific show. It is usually not because your quilt is bad!

The calls below are just a sample of the many opportunities out there. For more search "Fiber Art Calls for Entry" or "Quilt Calls for Entry"

**AQS Quiltweek Grand Rapids**, August 22-25, 2018, Entry Deadline April 13, 2018 <http://www.quiltweek.com>

Several opportunities for entry at international Quilt Festival Houston, November 8-11, 2018:

**In the American Tradition**, Entry Deadline March 15, 2018 [www.callforentriesamerican.com](http://www.callforentriesamerican.com). This exhibit features recently made quilts that harken back to the time of traditional blocks, styles, and techniques as their design source.

**In Full Bloom**, Call is open February 2 through April 12, 2018 [www.callforentriesbloom.com](http://www.callforentriesbloom.com) Just as quilters create beautiful pieces of art with fabric, florists and gardeners cultivate works of beauty from the soil. The International Quilt Festival will showcase floral quilts from across the spectrum in color and splendor in the special exhibit.

**Hands All Around** Call is open February 21 through April 19, 2018, [callforentrieshands.com/](http://callforentrieshands.com/) Artists from all around the world incorporate influences from their own cultures into the design and technique of their quilts. This prestigious, long-running international showcase will include recent quilts by international artists who create works inspired by such.

**Tactile Architecture** Call is open March 14 through May 10, 2018

<http://callforentriesarchitecture.com>

Buildings have a long history of inspiring the creative designs of quilt makers. This annual juried exhibit challenges quilt makers to create works based on architectural themes and inspirations. This exhibit will premiere at International Quilt Market and Festival November 2018.

**Landscape Quilts** - Call is open March 7 through May 3, 2018

<http://callforentrieslandscape.com>

From valleys and volcanoes, and mountains to monuments, landscapes often inspire artists, including many in the quilt world. The quilts in this exhibit were created using a variety of styles and techniques, all inspired by memorable landscapes.

**Primitive Quilts**-Call is open March 15 through May 17, 2018

<http://callforentriesprimitive.com>

From hand pieced to machine made, the simple and unassuming designs of primitive quilts lend themselves to all techniques of quilting. This exhibit includes recently made quilts created in the primitive style.

**Power of Women** - Call is open April 16 through June 13, 2018

<http://callforentriesprimitive.com>

Join us as we celebrate the power of women. Entrants are invited to create a quilt or sheer art cloth that expresses their love and appreciation of an influential mother, sister, aunt, friend, or any greatly admired woman. This unique installation will feature three separate display sections, each telling a part of the story.

Questions? [sally@sallywrightquilts.com](mailto:sally@sallywrightquilts.com)

Sally Wright

Sally Wright

Programs Co-Chair

Westside Quilters

[Programs@WestsideQuiltersLosAngeles.org](mailto:Programs@WestsideQuiltersLosAngeles.org)

[www.westsidequilterslosangeles.org](http://www.westsidequilterslosangeles.org)





## A NEIGHBORLY GUILD CALENDAR

### March 2018

March 7, 23-25 Santa Monica Quilt Guild <a href="http://www.santamonicaquiltguild.org">www.santamonicaquiltguild.org</a>	March 7 Quilters College March 23-25 Quilt Retreat at the Mary & Joseph Retreat Center in Rancho Palos Verdes
March 9 Orange County quilters Guild <a href="http://www.orangecountyquiltersguild.com">www.orangecountyquiltersguild.com</a>	Peggy Martin– Program: Beyond Tradition
March 11 Simi Valley Quilt Guild <a href="http://www.simivalleyquiltguild.org">www.simivalleyquiltguild.org</a>	Janet Botroff, <i>A Quilter's Journey</i>
March 10 Westside Quilters <a href="http://www.WestsideQuiltersLosAngeles.org">www.WestsideQuiltersLosAngeles.org</a>	Laura Fraga Workshop:- Journey With Dear Jane
March 12& 13 San Fernando Valley Quilt Association <a href="http://www.sfvqa.net">www.sfvqa.net</a>	Lujean Seagal Program: Beyond Boring Borders Workshop: Beyond Boring Borders
March 13 LA Modern Quilt Guild <a href="http://www.lamqg.blogspot.com">www.lamqg.blogspot.com</a>	Meeting Chawne Kimber.speaker
March 17 Glendale Quilt Guild <a href="http://www.glendalequiltingguild.org">www.glendalequiltingguild.org</a>	Joe Cunningham Program: Album Style: Rock the Block
March 20, 21& 22 South Bay Quilters Guild <a href="http://www.southbayquiltersguild.org">www.southbayquiltersguild.org</a>	Jacquie Gering Program: Modern Quilting: You'll Know It When You See It Workshop: Slice & Insert Improvisation & Workshop: Scrappy Improvisation
March 18 African American Quilters of Los Angeles <a href="http://www.easysit.com/aaqla">www.easysit.com/aaqla</a>	Meeting
<b>April 2018</b>	
April 4 Santa Monica Quilt Guild <a href="http://www.santamonicaquiltguild.org">www.santamonicaquiltguild.org</a>	Larry Gonzales <i>from Retro Clean: Care of our past and future antique quilts</i>
April 10 LA Modern Quilt Guild <a href="http://www.lamqg.blogspot.com">www.lamqg.blogspot.com</a>	Meeting - 2 <sup>nd</sup> Monday of the month
April 10 San Fernando Valley Quilt Association <a href="http://www.sfvqa.net">www.sfvqa.net</a>	Program: Games from the Program Committee
April 11 14 Glendale Quilt Guild <a href="http://www.glendalequiltingguild.org">www.glendalequiltingguild.org</a>	Linda Schmidt Program: Short Attention Span Quilting Workshop: Creating with Cool Stuff
April 15 African American Quilters of Los Angeles <a href="http://www.easysit.com/aaqla">www.easysit.com/aaqla</a>	Meeting
April 17 & 18 South Bay Quilters Guild <a href="http://www.southbayquiltersguild.org">www.southbayquiltersguild.org</a>	Shirley McGuire – <a href="http://EZ-Woolworks.com">EZ-Woolworks.com</a> Program: Learn How to Do Wool Applique & Not Go Broke! Workshop: Felting, Reclamation & De-constructing & Wool Applique
April 19 & 20 Los Angeles County Quilters Guild <a href="http://www.quiltquildla.org">www.quiltquildla.org</a>	Program: Mary Tabar Workshop: - Snip and Flip
April 21 Westside Quilters <a href="http://www.WestsideQuiltersLosAngeles.org">www.WestsideQuiltersLosAngeles.org</a>	"Slow Stitching Saturday"

## OUT AND ABOUT

- ✂ **South Bay Quilters Guild invites you to their** March 20, 2018 meeting with guest speaker Jacquie Gering, co-founder of the Modern Quilt Guild. Jacquie will share her definition of Modern Quilting and directly address some of the misunderstandings and questions about the modern aesthetic. Doors open at 6:00 pm, Meeting begins at 7:00. Meeting at: St. Andrews Presbyterian, 301 Avenue D, Redondo Beach, CA 90277 Free to SBQG and Long Beach Modern Quilt Guild members. \$5 guest fee for all others. For more information contact Melanie Dreike, 310-214-2175
- ✂ “Axe Bahia – The Power of Art in an Afro-Brazilian Metropolis” at the **Fowler Museum** at UCLA through April 15, 2018.
- ✂ **Art Quilts -69 quilts from two SAQA regions:** December 9, 2017- March 18, 2018 (Wed. - Sun. 11 am to 4 pm) at the **California Heritage Museum Santa Monica**
- ✂ The **Huntington Library and Galleries** is showing eight 19<sup>th</sup> Century Quilts. For more information go to [www.huntington.org](http://www.huntington.org).
- ✂ Quilters by the Sea Quilt Guild will have their opportunity quilt “Fractured Fiesta” at WQ’s May 12<sup>th</sup> General Meeting.

**See the Speaker Calendar of the Southern California Council of Quilt Guilds for additional events.** Go to [www.sccqg.org](http://www.sccqg.org) scroll down to the bottom of the homepage and click on the box “Speakers” and see other SCCQG guilds and speakers into 2018.



## Editor's Note:

Hope many of you had a chance to attend QuiltCon, the Modern Quilt Guild’s annual quilt show in Pasadena. I was struck by what is modern can also be what is very old or traditional. A number of the quilts on display were “tied”; you can’t get much more old school than that! While other quilts displayed amazing precision while created striking graphics designs in the machine quilting. I was surprised by the number of political statement quilts in the youth category. I find the modern movement graphic presentation fun, delightful, and surprising all at the same time.

Happy St. Patrick’s Day and Happy Stitching,  
Debbie Nussbaum



## Next Executive Board Meeting

The next meeting of the Executive Board will be held, March 3, 2018

All members of Westside Quilters are welcome to attend with prior notice to  
[Pres@WestsideQuiltersLosAngeles.org](mailto:Pres@WestsideQuiltersLosAngeles.org).

### Our Mission

A new kind of guild organized for educational and charitable purposes; to promote cooperation and the exchange of ideas among quilters; to instruct members in methods and techniques of traditional and contemporary creative quilting; to serve mini-groups and their philanthropic endeavors within the community; to inspire personal achievement.

### Officers 2017-2018

President	Kim Ryan
Vice President	Sonja Daniel
Secretary	Sally Madigan
Treasurer	Karynn Dittmar
Program	Sally Wright, Roberta Walley, Kathryn Pellman
Membership	Luann Jaffe
Newsletter	Debbie Nussbaum
Philanthropy	Perla Rothenberg, Virginia Marshall, and Lisa Drew
Website Manager	Sally Wright

### Appointed Positions

<b>Hospitality</b>	Bobbi Leung
<b>Meeting Set-Up/Take-Down</b>	Marianne Simpson Lisa Drew and Sonja Daniel
<b>Photographer</b>	Tanya Heldman
<b>President Emeritus</b>	Perla Rothenberg

Mailing Address                      **Post Office Box 641925**  
                                                 **Los Angeles, CA 90064**

### Website

[www.WestsideQuiltersLosAngeles.org](http://www.WestsideQuiltersLosAngeles.org)

Facebook    We're on Facebook. Check out the banner on the WQ website home page (lower center).

Amazon    There is a boxed message in the lower center of our website home page giving a direct link to Amazon. By using this link, anything you purchase earns a 4% "dividend" paid directly to WQ. *This only works if you enter the Amazon website from the WQ website link.*

iGive.com    This is another way to benefit WQ when shopping on the Internet. Here you need to register (the iGive.com logo appears in the lower center on the WQ website home page and links you directly to iGive.com). More than 800 Internet retailers participate (Barnes & Noble, Bed Bath & Beyond, Enterprise Rent-A-Car, Lancome -- to name a few). Follow the instructions at iGive.com.

Non-Profit Status    Westside Quilters is tax-exempt from Federal income tax under section 501(c)(3) of the Internal Revenue Code, and classified as a public charity under section 170 of the Code, according to the determination letter dated May 26, 2011 received from the Internal Revenue Service. The effective date of exemption is June 17, 2010. Donations to Westside Quilters are fully tax-deductible for individuals and other entities such as corporations, partnerships, trusts; Westside Quilters is qualified to accept tax deductible bequests and gifts or transfers of gifts.

F.E.I.N.    27-3145733  
(Federal Employer Identification Number)

